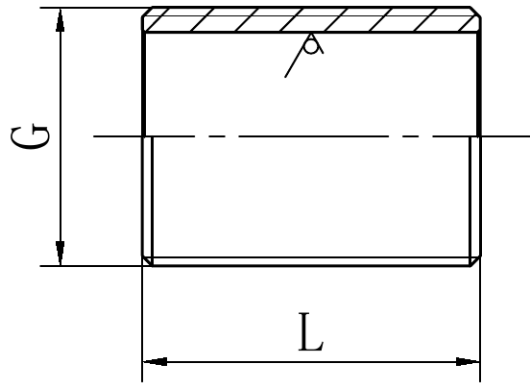


3.2 / 



DN	G	L
6		18
8		18
10		22
15		25
20		30
25		35
32		38
40		38
50		45
65		55
80		60
100		70

				2026-03-20	THREAD NIPPLE		
	0.5~3	>3~6	>6~30				40S
	±0.1	±0.1	±0.2				
	>30~120	>120~400	>400~1000				
	±0.3	±0.5	±0.8				BY-TN 40S